

Exploring Shared Determinants of Health

Towards a Shared Approach to Companion Animal and Human Health Promotion

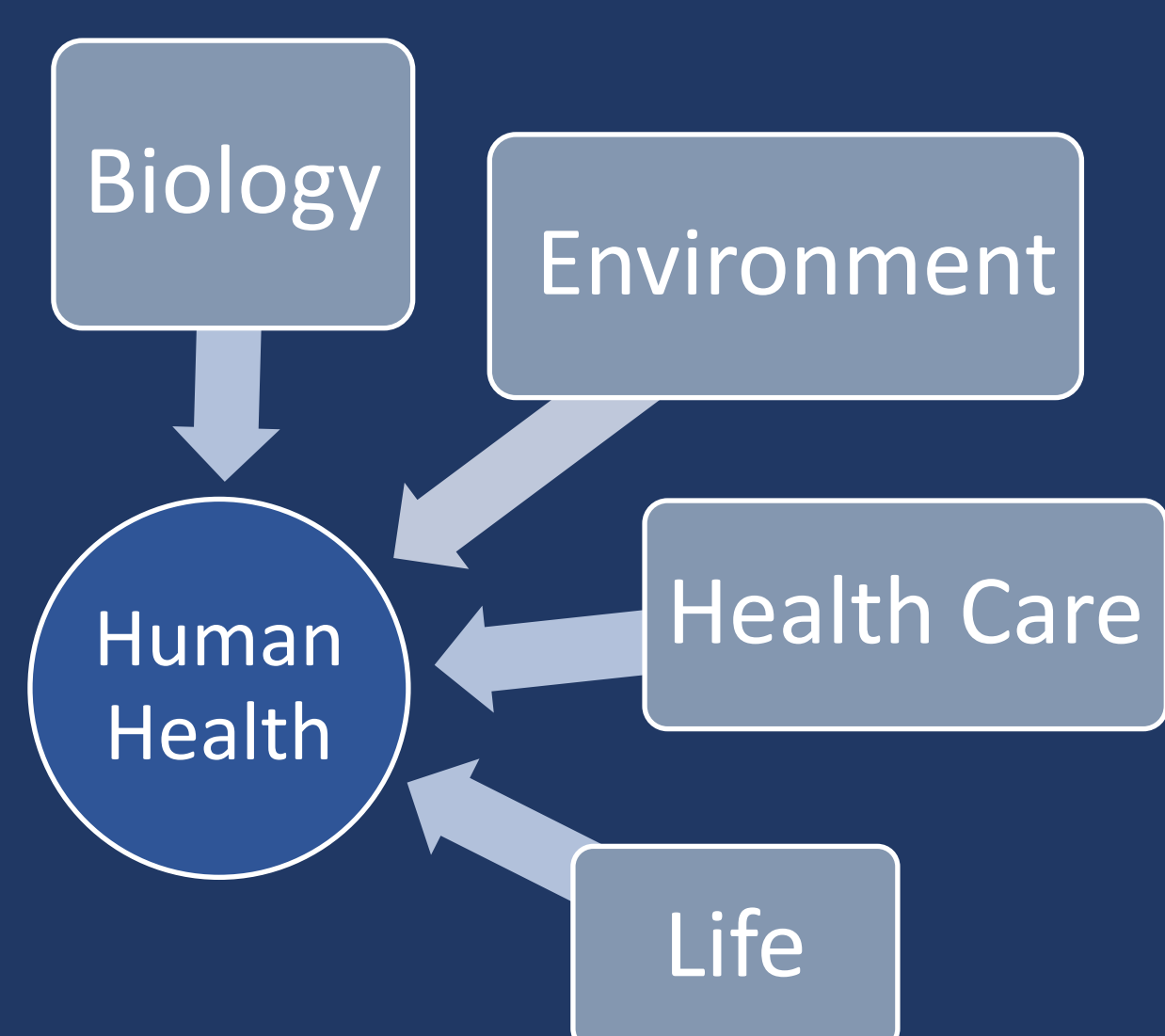
Riley Bauman and Dr. Jane Parmley

Email: baumanr@uoguelph.ca



Background

- Human determinants of health guide public health planning.¹



- No companion animal determinants of health model exists.

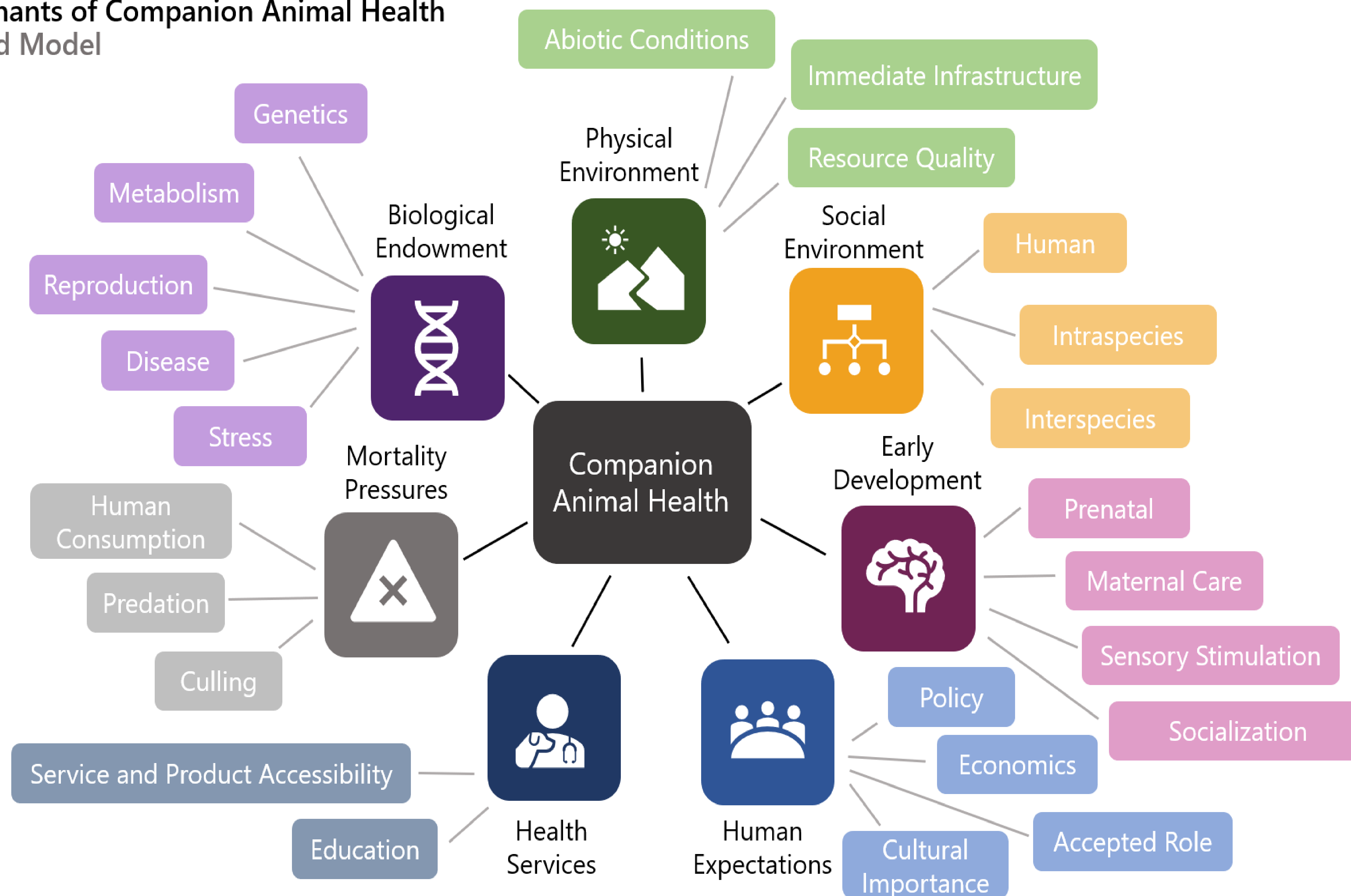


- Vulnerable human and pet populations experience interdependent health challenges.²

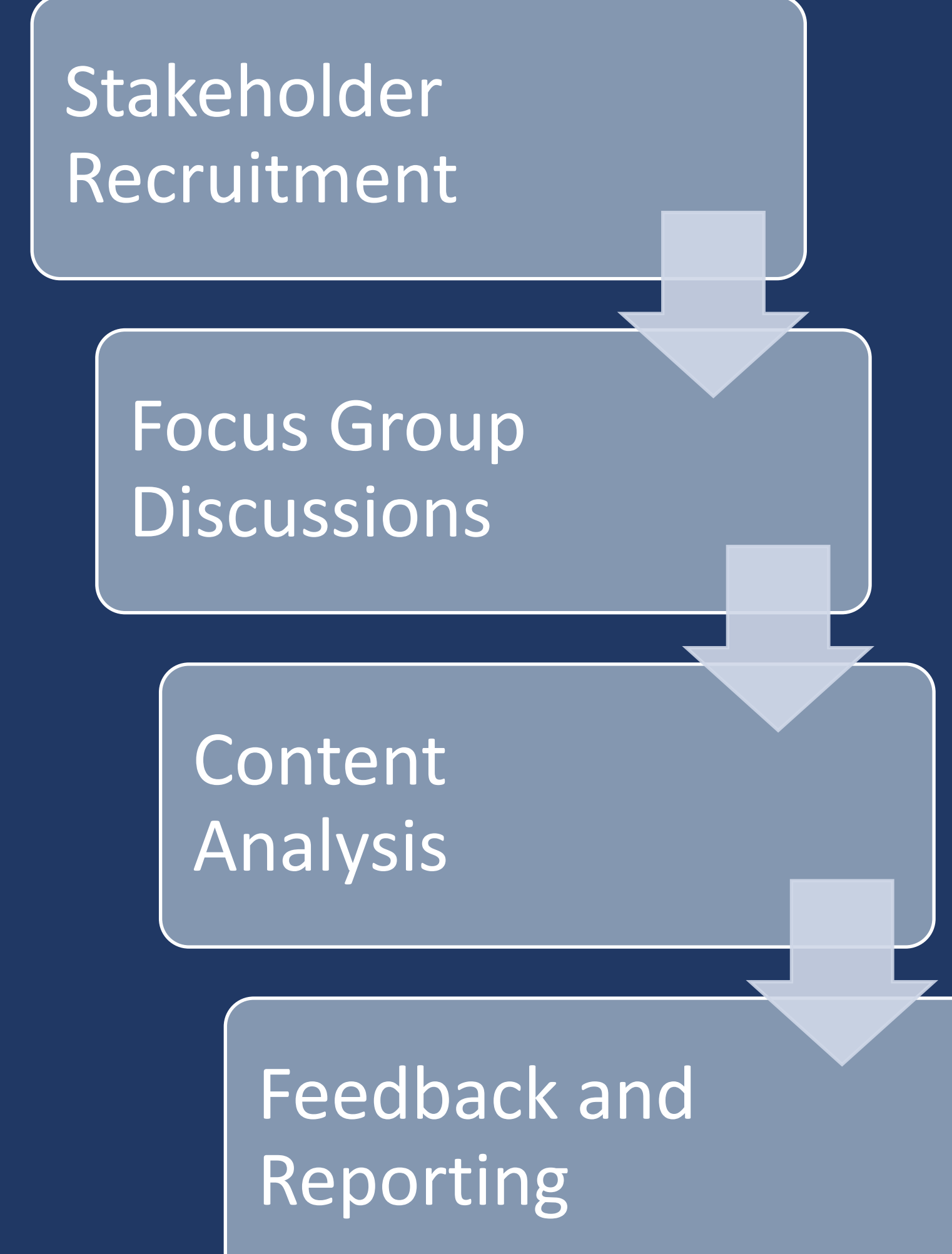
Objectives

- Develop and validate a determinants of health model for companion animals
- Determine how companion animal and human determinants of health are shared and interdependent
- Identify One Health actions that address shared determinants of health

Determinants of Companion Animal Health Proposed Model



Proposed Methods



Potential Impact

Shared determinants could help guide One Health actions that promote overall community health.

References

- Pourbohloul B, Kiény M-P. 2011. Complex systems analysis: Toward holistic approaches to health systems planning and policy. *Bull World Health Organ* 89:242.
- Card, C., Epp, T., & Lem, M. (2018). Exploring the social determinants of animal health. *Journal of veterinary medical education* 45(4), 437-447.

Determinants of Companion Animal Health Proposed Model

